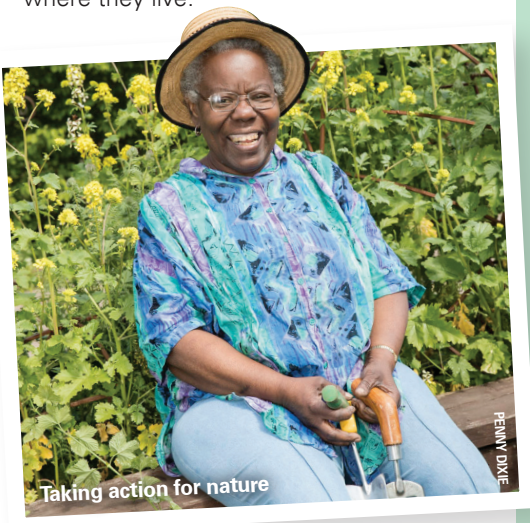


Warwickshire Wildlife Trust 2021 Annual Report

2021 was a year of fantastic progress despite the (now familiar) problems associated with Covid restrictions.

As the financial section shows, it was a record year for both the charity and company. This created a significant surplus which means, when added to the hugely generous response of supporters to our Nature Recovery Fund appeal (thank you!!), that we have massively boosted the funds available to buy land for new habitat creation. Despite a very competitive market preventing us securing some opportunities, the Trust is well placed on others and working hard to complete purchases.

Other achievements include more of our woodland estate now being actively managed for a large range of wildlife, continuing our work along the River Cole, securing the commitment of the National Lottery Heritage Fund to support work on the River Sherbourne in Coventry and working closely with Coventry City of Culture – both helping people help wildlife in our main city. All this whilst also developing strategies to get nature out of decline and into recovery, with people everywhere taking action for the wildlife where they live.



Our Impact at a glance



40 young adult volunteers actively engaged with the Wilder Future for Warwickshire project.



2,915 work days donated by volunteers for all types of the Trust's work



We helped over **150 people improve their mental health** through our health and wellbeing sessions.



99.5 days of work took place with Severn Trent employees via their Community Champion Days.

Approximately **2,286 practical days** were spent on improving our nature reserves by both staff and volunteers.



45 farmers are now members of the **Arden Farm Wildlife Network** with **2 new sustainable farming groups** developed to cover South Warwickshire and the Leam & Upper Avon river catchments.



Approximately **35 – 40 hectares** of woodland have been improved as part of the Trust's woodland management strategy in 2021.

Social media followers (end of 2021)



Twitter 10,923



Facebook 10,912



Instagram 5,859



LinkedIn 1,296



£100k raised for our Nature Recovery Fund Appeal in 2021

Some key highlights

Nature Reserves

A difficult start to the year, with a further lockdown, meant practical management on nature reserves was prioritised to key tasks. However, throughout the year, the staff and volunteers' efforts started to close the gap to pre-pandemic levels by achieving approximately 2,286 days of practical work dedicated to making our nature reserves wilder places.

Woodland Management

Delivery of woodland management across Snitterfield Bushes, Wappenbury Wood and Oakley Wood, meant the Trust's strategy continues to ensure your woodlands are well managed, full of wildlife and resilient to the challenges they face in the future.

Approximately 35 – 40 hectares of woodland have been managed as part of the Trust's woodland management strategy in 2021.

Sherbourne Valley Project

The National Lottery Heritage Fund agreed to extend the development phase, moving the stage two application submission from March to May 2022. If the bid is successful, the delivery phase will start in October 2022 and run for four years.

Commitment from project Board Partners increased with Severn Trent and the Environment Agency both doubling their cash match funding commitment for the Delivery Phase and Coventry City Council increasing theirs threefold. The overall budget for the project is projected to be approximately £3.5million - the largest project in the Trust's history.



LYRiC trainee Freya



Harvest mouse

Love Your River Cole

A partnership led by the Trust's Tame Valley Wetlands team secured a grant of £705,000 from the Green Recovery Challenge Fund to continue work on the Love Your River Cole (LYRiC) project.

Delivered by a partnership of eight organisations, it involved tree planting, wildflower meadow creation, wetland habitat enhancements as well as access improvements to paths and trails through key sites. It also had a strong focus on creating and supporting local green jobs in partnership with The Prince's Trust, offering traineeships aimed at giving people the experience and accredited training required to pursue a career in the environmental sector.

Arden Farm Wildlife Network (AFWN)

The Arden Farm Wildlife Network was extended by a further year and funding from the Rural Payments Agency came to an end in March 2022, following three years of successful delivery.

The network now has 45 members who collectively farm over 10,400 hectares. This has grown from 16 members at the start of the project in 2018. Specialists from around the country have provided advice to the farmers on subjects such as harvest mice, water voles, barn owls and lapwing. The farmers were also keen to keep up with subjects such as

regenerative agriculture, soil nutrition, cover crops and agroforestry.

Two new sustainable farming groups covering South Warwickshire and the Leam & Upper Avon river catchments have also been developed. New funding will be sought in 2022.

River Restoration Work

A funding bid to the Highways England programme was accepted. This project relates to the Fillongley river catchment around the M6 and seeks to restore 14 hectares of species rich lowland meadows, orchards and hedgerows enabling more connectivity for wildlife. 15 ponds will act as stepping stones for amphibians and dragonflies, provide flood storage and slow the flow of water in the landscape, as this area has seen flooding in the past. It will fund £364,831 over three years and includes existing and new staff costs, trainee costs, management and overheads.

Volunteering

In 2021 we saw an increase of 92 volunteers over the course of the year, another year when it was challenging to deliver volunteer activity due to Covid-19.

The total sum of volunteer hours worked across the Trust in 2021 was 20,404. Using a standard Government measure this equates to £283,775.

Wilder Future for Warwickshire

The Wilder Future for Warwickshire project, funded by the National Lottery Heritage Fund, empowers young people to deliver a wilder future for their local environment. Throughout 2021, 40 young adult volunteers actively engaged with the project and are now busy setting up a Trust Youth Committee.

Severn Trent Community Champion Hours

A five-year partnership with Severn Trent, whose employees deliver Community Champion Days, began in July 2021. Employees contributed to tasks across various reserves and completed work such as invasive species management, glade clearance and tree planting, totalling 99.5 practical volunteer days.

Health and Wellbeing

In 2021 we supported over 150 people to improve their mental and physical wellbeing by helping them access and connect with nature, whilst supporting many back into volunteering, education or employment. We also offered an eight-week bush craft programme for ex-service personnel.



The Environment and Me

TEaM faced a challenging year in 2021, as beneficiaries' confidence and wellbeing were negatively impacted during Covid. Thanks to the staff, the project was soon back, supporting over 60 people in

allotment gardening, bushcraft sessions and walks, improving their confidence once again. Some have now returned as volunteers!

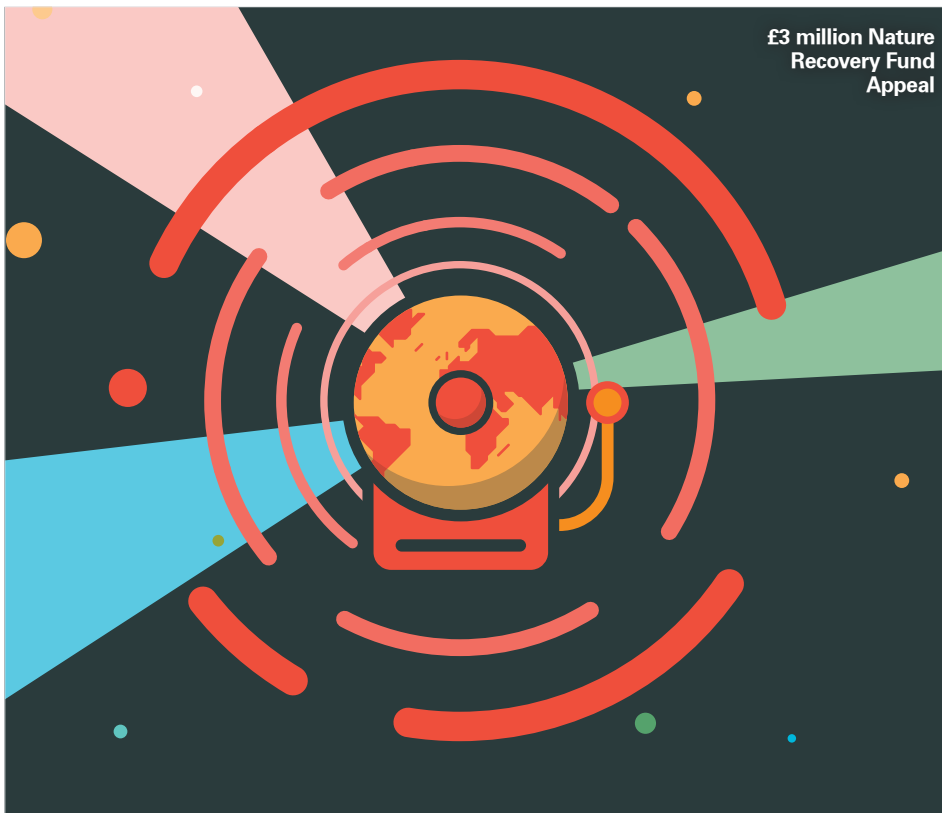
Leamington's Green Connections

In 2021 the project delivered 29 volunteering sessions, 4 x five-week 'Wellbeing in the Woods' courses and several stand-alone wellbeing events, all aimed at connecting the community to each other and their local reserves.

As an added benefit, almost 79 days of volunteers' time was spent undertaking practical conservation tasks at Oakley Wood, Leam Valley and Whitnash Brook.

Nature Recovery Fund Appeal

The Nature Recovery Fund Appeal launched in March 2021 with the aims of raising funds for land purchase, increasing our profile and generating new support. Financially, the appeal is the most successful to date in the Trust's history, with final 2021 figures sitting at just over £100k. The appeal also saw an increase in pledgers who now donate monthly, alongside five legacies and gifts in wills dedicated to the Fund and £18,000 in support from corporates and charitable trusts. Thank you to all.



Financials

It's all thanks to you

Once again, we were overwhelmed by the support, loyalty and generosity of our members, supporters and volunteers throughout the year.

Thanks to you, we were able to continue our vital project work and much more, allowing people to access nature, wildlife and green spaces in their local area, which has proven to be a vital resource throughout the last few years.

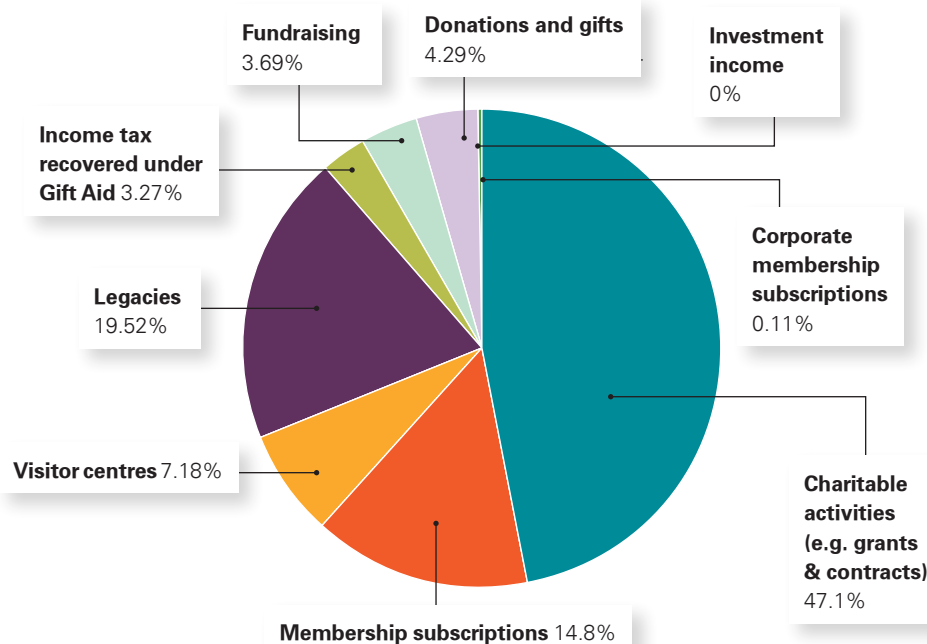
We thank every single person who supported us throughout 2021 and whose support means we are able to fulfil the work we are here to do; to put nature into recovery and to create a wilder Warwickshire.

Overall Financial Performance table:

	Charitable	Trading (Middlemarch Environmental)	Total
Total Income	£4,303,000	£5,877,000	£10,190,000
Total Expenditure	£3,782,000	£5,343,000	£9,125,000
Net Income (Expenditure)	£521,000	£544,000	£1,065,000

Income 2021

Charitable activities (e.g. grants & contracts)	£2,027,000
Membership subscriptions	£637,000
Visitor centres	£309,000
Legacies	£840,000
Income tax recovered under Gift Aid	£141,000
Fundraising	£159,000
Donations and gifts	£185,000
Investment income	£0
Corporate membership subscriptions	£5,000
Total	£4,303,000



Like a lot of charities, we apply for grants from a variety of organisations in a competitive process which involves us having to demonstrate the importance of our vital work. We are extremely grateful to the following organisations who awarded us funding in 2021

- Armed Forces Covenant Fund Trust
- Citizen Housing
- Coventry and Warwickshire Clinical Commissioning Group
- Coventry City Council
- Environment Agency
- European Social Fund
- Highways England
- National Lottery Community Fund
- North Warwickshire Borough Council
- Nuneaton & Bedworth Borough Council
- Orbit Housing
- Rugby Borough Council
- Rural Payments Agency
- Severn Trent
- Solihull Metropolitan Borough Council
- Stratford District Council
- Tesco Bags of Help
- The 29th May 1961 Charitable Trust
- The Ratcliff Foundation
- The Saintbury Trust
- Waitrose (Solihull and Alcester)
- Warwick District Council
- Warwickshire County Council
- William A Cadbury Charitable Trust



Warwickshire Wildlife Trust

Membership

The lifeblood of our organisation is our membership. Membership subscriptions provide us with vital income, free from conditions set by funders, which allows us to invest in the areas that matter most. Without your support our charity would not be able to function. Thank you!

In a year where we were finding our way through the aftermath and uncertainty of the pandemic, the Trust was delighted to see a continued increase in its membership. We know that now,

more than ever, people are rediscovering their connection with nature and are pledging their commitment to take action for wildlife. This is reflected in the 4.4% increase in membership in 2021, with over 90% of our members choosing to retain their membership compared to 88% in 2020. We are incredibly grateful to each and every member who supports the Trust and brings us one step closer to making more space for nature and our goal of bringing our wildlife back.

Legacies

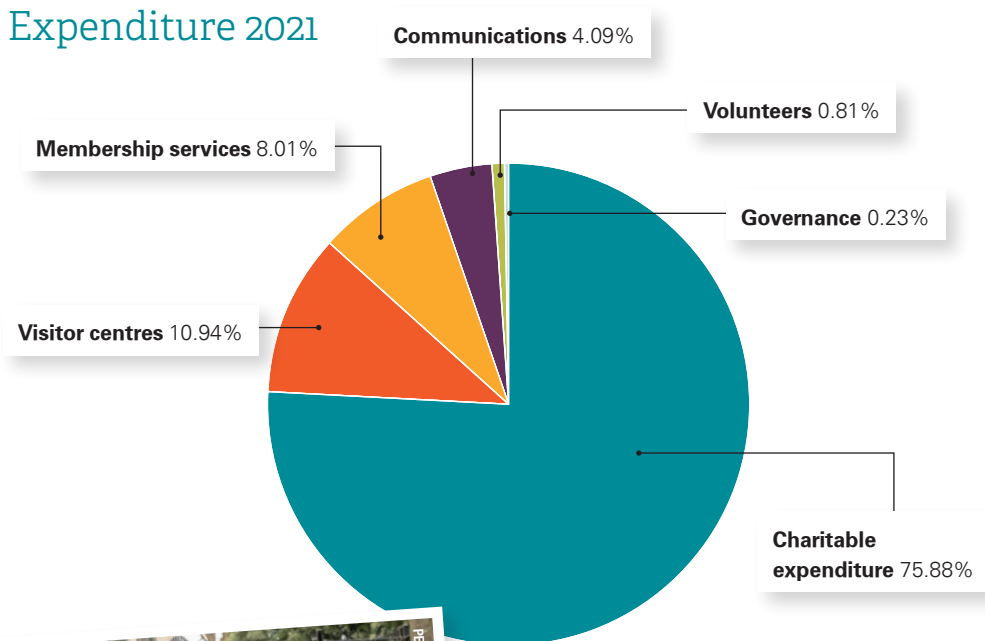
The Trust was notified of a total of £840,000 in legacy income in 2021. We are extremely grateful to the following people who left a legacy to help ensure wild places are safe for future generations to experience and enjoy:

- Michael John Welch
- Mr Hailey
- Lucy Jane Essex
- Tim Crowther
- Celia June Osborn
- John Bryan Thomas
- Vera Rosemary Harrison
- Alan Brain
- Benjamin Flavell
- Herbert Haywood.

We also thank the family and friends of the following people who made donations to the Trust in their memory:

- Roy Ledbury
- Kenneth Hornby
- Robin Toogood
- Rachel Hill
- Donald Riddoch
- Tim Crowther
- Aubry Ward
- Rita Fletcher
- James Stanley Dunsby
- Trevor Cox
- Linda Trost
- Robin Gibbs
- Roger Watson
- Betty Browning
- Mr M Spraggett
- John Henry Jones
- Gloria Nightingale
- Walter & Sheelagh Dean
- Christine Green
- Margaret Thompson
- Peter Fitzsimmons
- Clem Hindmarch.

Expenditure 2021



Charitable expenditure	£2,870,000
Visitor centres	£414,000
Membership services	£303,000
Communications	£155,000
Volunteers	£31,000
Governance	£9,000
Total	£3,782,000

Designated Funds	2021	2020
Nature Recovery Fund	£2,519,000	£1,500,000
Charity Projects Fund	£1,011,000	£946,000
Infrastructure Investment Fund	£276,000	£25,000
Covid-19 Recovery Fund	£0	£315,000
Contingency	£730,000	£730,000
Total	£4,535,000	£3,516,000

Vision for the future – 2030

Throughout 2021, the development of the national 30by30 strategy continued. The Trust also developed a strategy to localise and deliver the collective approach across Warwickshire, Coventry and Solihull. This strategy was launched in the Spring 2022 magazine and its aim is to help 1 in 4 people in the area to take action for nature, with more space for nature, with more people on nature's side.

The solid financial performance of the charity and our trading subsidiary, Middlemarch and exceptional legacies throughout 2021, mean the Trust can designate more funds to purchase more land, helping to achieve our strategy objective of 30% of land managed for wildlife.

We will actively seek to expand the land we manage for wildlife but it will be the right land in the right place and it will be land which has low value for wildlife at the moment, which we will improve by creating new habitats. We will double our estate in ten years by adding 1,000 hectares to our existing nature reserves.

To help achieve our goal of 1 in 4 people in Warwickshire, Coventry and Solihull acting for wildlife, we will inspire and support community action through #TeamWilder. A people powered movement, designed to inspire and empower people to take meaningful actions that bring about nature's recovery. Research has shown that if 1 in 4 people adapt

their behaviour, this can be enough to change the behaviours of the majority.

We look forward to sharing our success stories with you in the coming months and ask you to share any stories about projects you have been involved in with us too.

As part of the UK network of Wildlife Trusts, we work to ensure that our local actions add up to have a collective impact and help address global issues.

Local actions have a collective impact



KATRINA MARTIN/200VISION