

Dunsmore Living Landscape area

Warwickshire Wildlife Trust
 Brandon Marsh Nature Centre
 Brandon Lane
 Coventry
 CV3 3GW

024 7630 2912
 enquiries@wkwtr.org.uk

© 2019 Warwickshire Wildlife Trust



© Kathleen Everitt

About Dunsmore

The Dunsmore Living Landscape scheme is a Warwickshire Wildlife Trust led project working to restore this important ancient landscape to one rich in wildlife accessible to all in the areas lying between east Coventry, Rugby and north Leamington. With the generous support of the National Lottery Heritage Fund, the project is focusing on a landscape-scale level of action for wildlife in the area, allowing us to restore ancient woodland, historic hedgerows, ponds and flower rich grassland, creating habitat for iconic wildlife such as the hazel dormouse and purple emperor butterfly.

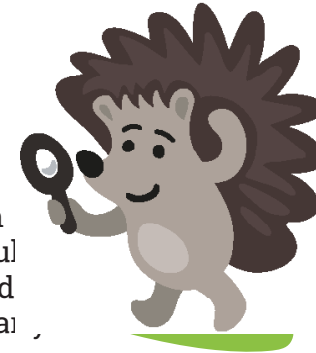
By working with local partners, landowners and communities we are improving these habitats, helping to conserve historical sites and improve access, interpretation and general information about the area. We are also providing learning and training opportunities and running a range of events and activities, designed to reconnect people with their local living landscape, green spaces and heritage sites.

This leaflet has been created to provide you with some information about the local area and provide you with an opportunity to get up close to nature and explore.

For more information, please visit exploredunsmore.org

Wildlife spotting

The Warwickshire countryside is filled with an abundance of beautiful plants, birds, animals and all year round – particularly the spring and summer.



Can you help Harry the Hedgehog find these lovely things?



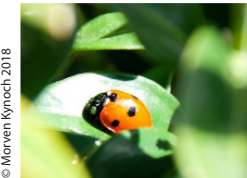
© Jay Warren 2018

Bluebell



© Stevonn Cheshire 2018

Silver-washed fritillary butterfly



© Marven Knoch 2018

7 spot ladybird



© Richard Bailey 2018

Jay



© Rock and wasp 2018

Oak tree leaf



Dunsmore Living Landscape

Figure of Eight Trail

Ryton Wood

2km



© Image by rights



warwickshirewildlifetrust.org.uk
exploredunsmore.org



Welcome

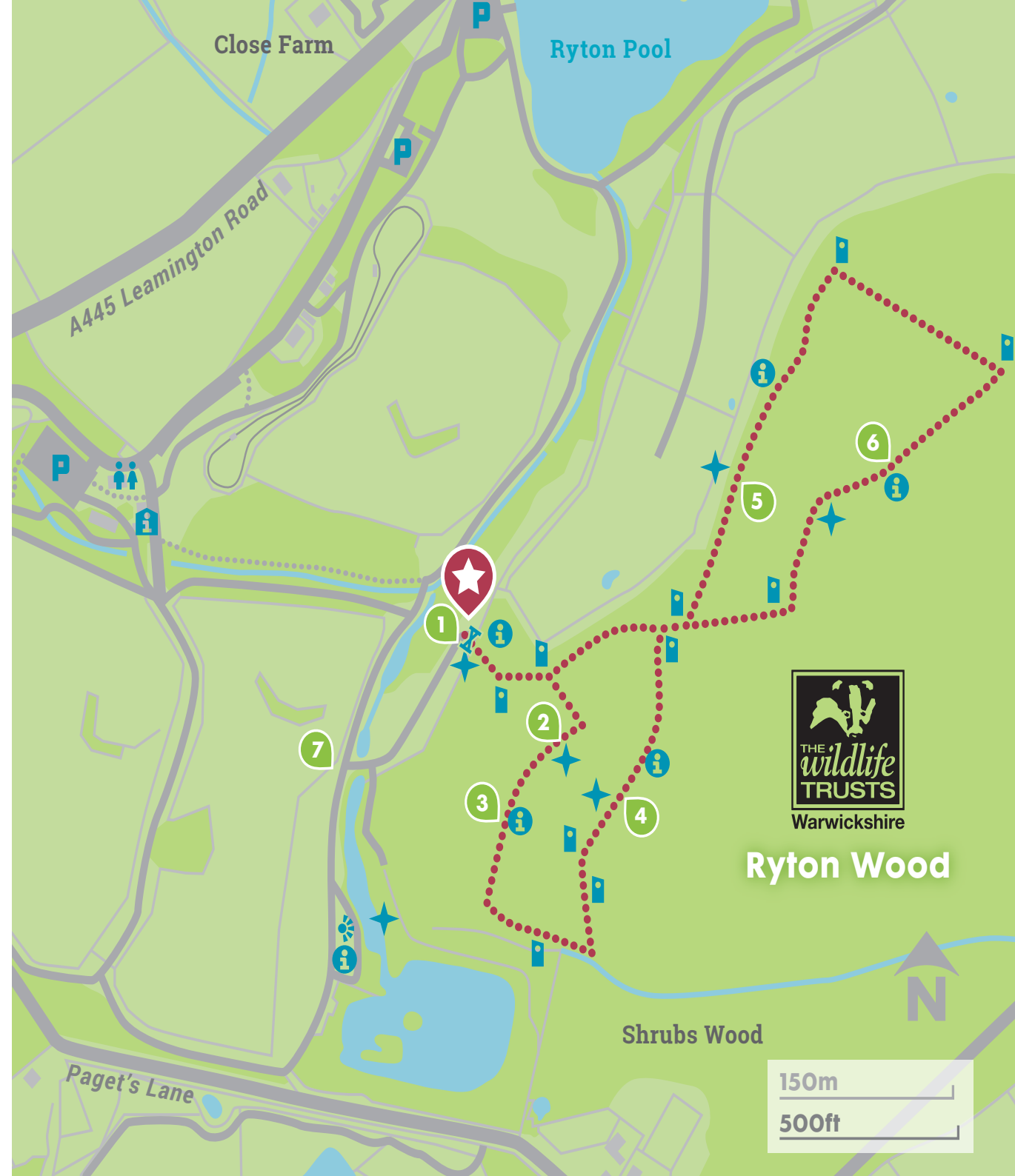
Welcome to Ryton Wood, thanks for stopping by!

Ryton Wood is one of the county's largest surviving semi-natural ancient woodlands and one of our key sites in the Dunsmore scheme area. It covers 85 hectares, has been designated as an SSSI and boasts an extensive list of notable species, including the purple hairstreak butterfly.

Parts of Ryton Wood date back to the 11th century, so the land may have been wooded since the end of last ice age. Finding coppiced, small-leaved lime stools is evidence to support this. Once the most common tree 5,000 years ago, the species is no longer so common. Huge ditches also indicate the wood's ancient, medieval boundaries. Forty or so species of tree and shrub have been identified, with oak being the dominant tree. An abundance of honeysuckle, our county flower, scrambles through the lower-growing hazel - enjoy its sweet perfume on summer days.

Key

- | | |
|---|---|
|  Start / Finish |  Gate |
|  Walk Route |  Special feature |
|  WCs |  Information Point |
|  Parking |  Viewpoint |
|  Visitor Centre |  Waymarker post |



The walk

Length: 2km 

- 1 Start your walk by heading into Ryton Wood. Check out the carved totem pole and interpretation board by the gate. Head towards the first waymarker and continue to follow subsequent waymakers as they direct you around the Figure of Eight Trail.
- 2 Take a look at our carved bluebell and owl bench.
- 3 As you continue along the path, you will come across a feature post revealing a site of ecological or historical significance in the wood as well as acting as a reminder to pause, look and listen. Look out for the others along the trail.
- 4 Appreciate our carved snail bench amongst the woodland flora.
- 5 After the seventh waymarker, take a break at our carved hedgehog and rabbit bench and try and listen out for the drumming of the great spotted woodpecker.
- 6 You are now at the last set of feature posts and carved benches on the trail. Soon after, turn right at the tenth waymarker and follow the path until you reach the entrance of Ryton Wood.
- 7 Before heading back to Ryton Pools Country Park Visitor Centre, take a detour to your left at the junction to visit our sculptures of a Straight-tusked elephant adult and calf nearby the sand martin hotel. These reflect important paleontological finds made on site during quarrying. Why not take a picture and tag us @ExploreDunsmore and let us know what you thought of our Figure of Eight Trail.

