

# Make a plastic Hedgehog House



## What you will need:

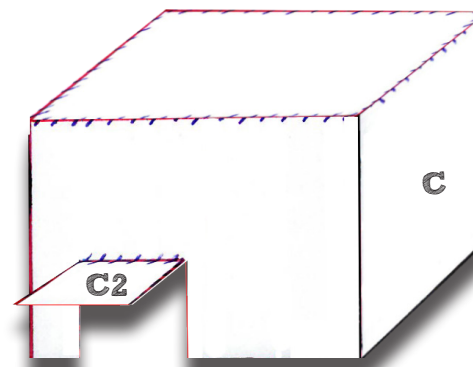
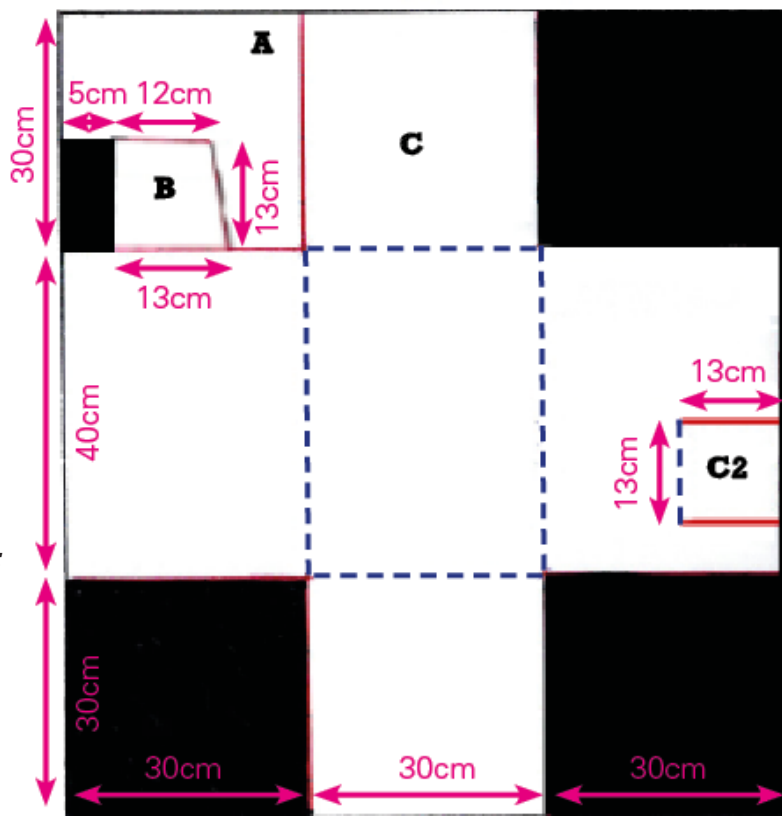
- 1 piece of corrugated plastic 90x100cm
- Sharp scissors
- Biro
- Cable ties
- Duct tape

## 1. Cut and score

Cut out and score pieces as follows:

- The **dashed blue lines** in the diagram above are edges to **stay attached**. These can be scored using sharp scissors, cutting through just *one layer* of the plastic.
- The other edges can be cut using scissors through *both layers* of plastic.
- You should be left with:
  - 1) an L-Shaped piece (labelled A above).
  - 2) a small, almost square piece (labelled B above).
  - 3) one big cross-shaped piece with a flap (labelled C and C2 above).

Anything shaded in black isn't needed, recycle these pieces!

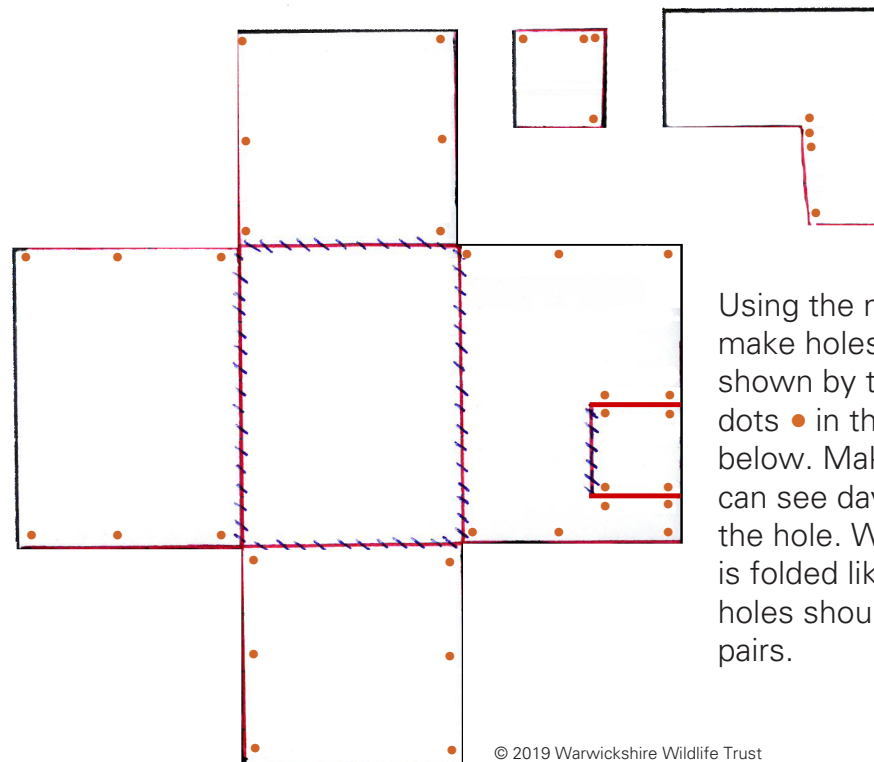


## 2. Fold

Fold along the dashed lines to create a box out of the large cross shaped piece.

Fold the flap outwards, against the hinge to form the roof of the tunnel entrance. The box should now look like the picture opposite.

## 3. Make holes



Using the nib of a Biro make holes in the places shown by the orange dots • in the picture below. Make sure you can see daylight through the hole. When the box is folded like above, the holes should line-up in pairs.

## 4. Form the house

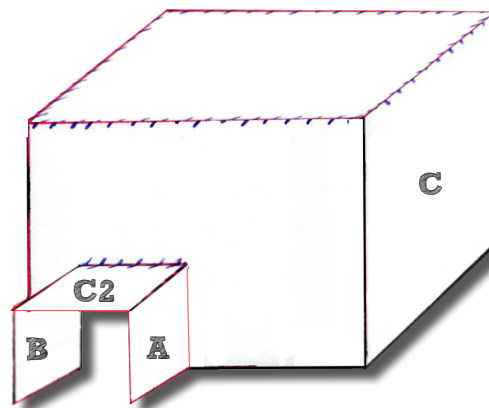
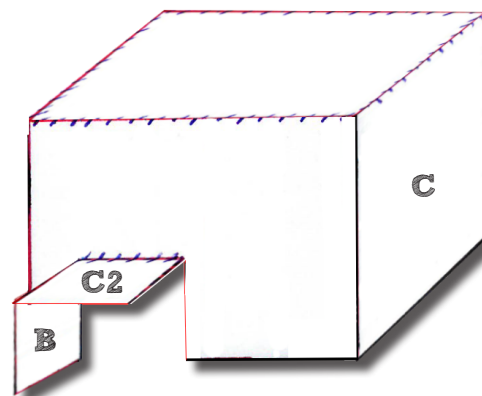
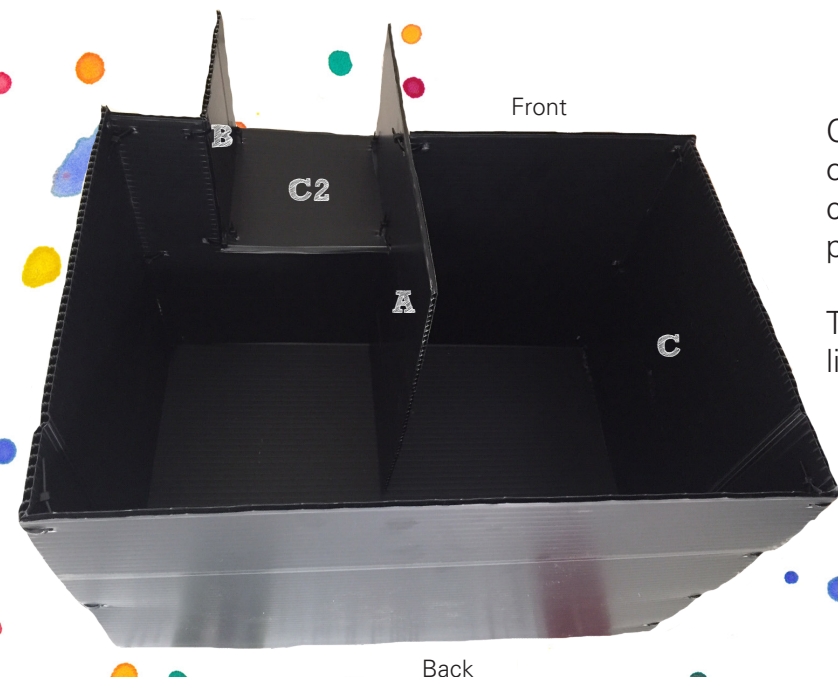
Starting at the corners closest to the lid of the box, thread and fasten cable ties through each pair of holes to tie the box together.

## 5. Use piece B

Take the square piece, labelled B; this will become one side of the tunnel entrance. Place it against the main part of the box with the sloping edge at the top, sloping towards the entrance of the tunnel. The flap should sit on top, making a gentle slope allowing water to run off the tunnel towards the front. Fasten this piece to the rest of the hedgehog house with cable ties.

## 6. Use piece A

Take the L-Shaped piece, labelled A; this will become the inside wall and the last side of the tunnel entrance. Place the long section upright inside the box, with the square bit poking out to make the final wall of the tunnel entrance. Fasten this piece to the rest of the hedgehog house with cable ties.



Carefully use scissors to cut off all of the long tails of plastic from the cable ties, cutting them as short as possible.

The inside of the box should now look like the picture opposite.

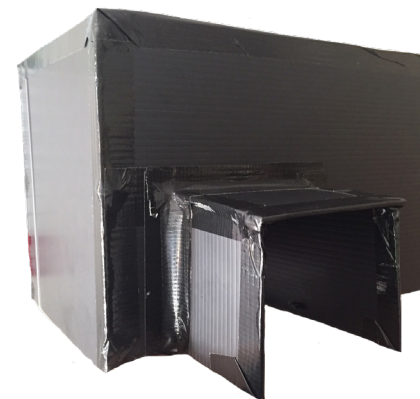


© Ceri Thomas 2019

## 7. Waterproof & decorate

To give some extra waterproofing, use black tape to seal the edges that have been cable tied together and also any sharp edges.

You can add stickers and other decoration if you like!



### Where to put your hedgehog house

Place your hedgehog house on the ground, in a sheltered and shaded area in your back garden. Place it within 5m of your house, and by a boundary like a wall or fence. Putting food and water out for hedgehogs can increase your chances of a 'hog moving in but be sure to locate your box away from the feeding area. Ensure there are leaves nearby or in the box for your hedgehog to use as bedding, or otherwise use pet hay.

### Is a hedgehog at home?

Lightly wedge a twig diagonally across the tunnel entrance. If it's dislodged the next morning, and it isn't hibernation season, it's likely that you have a resident hedgehog!

### When to put out your hedgehog house

Hedgehogs use houses to rest, breed and hibernate in so they can be put out year round. It might take a little while for a resident to move in. Only remove bedding and clean the box (with hot water) in March/April after hibernation and before breeding starts. Leave it to air dry.