

Make a wooden Hedgehog House

Tool Kit

- 12mm thick plywood (see cutting list).
- Hammer, saw and screwdriver.
- Approx 40 wood screws or nails.
- 2x long metal hinges for the lid (optional).
- A pencil and ruler.



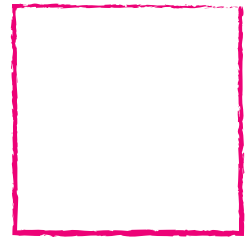
Where to put your hedgehog house

Place your hedgehog house on the ground, in a sheltered and shaded area in your back garden. Place it within 5m of your house, and by a boundary like a wall or fence. Putting food and water out for hedgehogs can increase your chances of a 'hog moving in but be sure to locate your box away from the feeding area. Ensure there are leaves nearby or in the box for your hedgehog to use as bedding, or otherwise use pet hay.



© Ceri Thomas 2019

2x Lid and Base
300 x 300mm



3x Sides
300 x 200mm



1x Front
300 x 200mm



104 x 125mm
entrance hole



1x Internal Wind Break
200 x 200mm

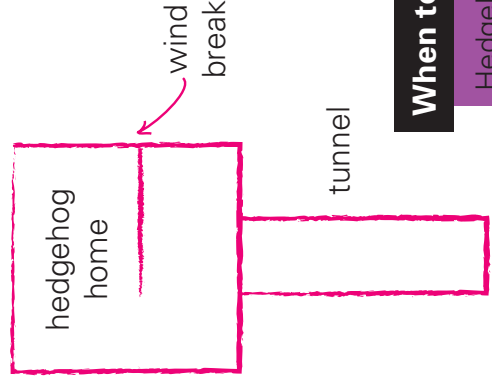


4x Tunnel
300 x 100mm



Top view

fence or wall



Is a hedgehog at home?

Lightly wedge a twig diagonally across the tunnel entrance. If it's dislodged the next morning, and it isn't hibernation season, it's likely that you have a resident hedgehog!

When to put out your hedgehog house

Hedgehogs use houses to rest, breed and hibernate in so they can be put out year round. It might take a little while for a resident to move in. Only remove bedding and clean the box (with hot water) in March/April after hibernation and before breeding starts. Leave it to air dry.

Let's build it!

1. Take the three side panels and the front panel and screw them together along their short sides, making sure that the entrance hole is open to the bottom.
2. Screw the base in place.
3. Position the windbreak 120mm from the entrance and secure in place by screwing through the base and one of the sides.
4. Take the two hinges and screw them to one of the sides, 40mm in from each corner.
5. Screw the top to the hinges.
6. Screw the four tunnel sides together along their longest sides to make a square tube.
7. Do not use creosote or any other form of wood treatment as this may be harmful to your new residents.