

Site Summary



Figure 1. Project area (blue), culverts (pins), brook (red)

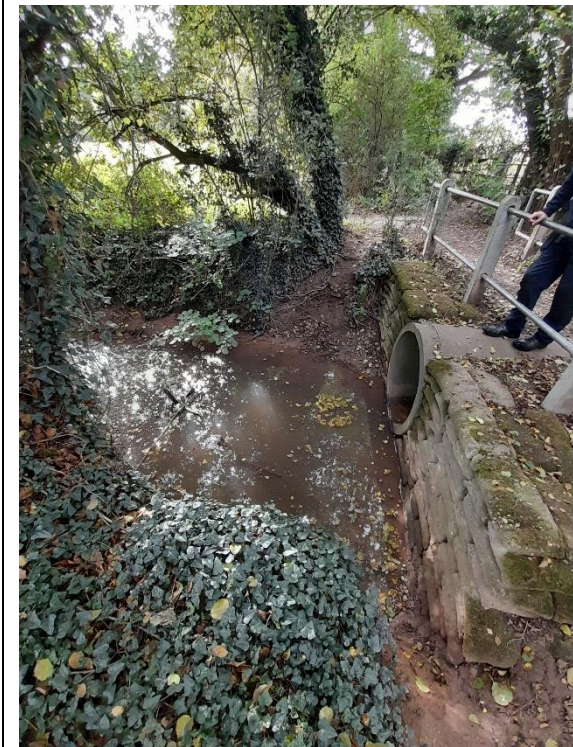
The project area covers the stretch of Pickford Brook that runs between the culvert on Woodridge Avenue (SP 28985 80511) to the culvert at the eastern end of Parkhill Drive (SP 29235 80507) as show on the map above (approx. 250m). There is potential for work upstream of Woodridge Avenue, and this will be covered on the site visit for context, however the main priority is the stretch referenced here.

The brook runs through a linear greenspace and is surrounded by scrubby mixed woodland (characterised by alder and some white poplar). A footpath runs along the brook, very close in places, along the southern side so any bank lowering/berm creation is to be done on the northern side. There are several outfalls present in this reach including one CSO. The brook contains several developing riffles and glides in addition to a number of deadwood blockages. However, the brook has suffered from large amounts of silt, at times making it slow and sluggish and extremely turbid.

The following images show the main points of interest above and within this stretch.



Issues upstream, including dominating headwall features running from SUDS ponds on new development site at Eastern Green and drying up of stream over summer. Taken at SP 28390 80568.



Culvert at SP 28853 80592.



Example of outfall at SP 28926 80526 (have previously talked with the local authority about an online pond or attenuation feature here)



Start of priority area: culvert at SP 28985 80511. We're unable to do anything about the culvert but can improve morphology downstream of here.



Bridge just
downstream of
culvert



Fencing being undermined just downstream of bridge and same area in spate last winter





Some nice stretches of gravels (that have been revealed increasingly over the last few months with improvements in sediment issues upstream), showing potential of the whole stretch



Fencing being undermined (natural solution needed) and potential area on the right for a berm feature



Build up of sand on banks and in-stream



Sluggish and uniform stretches



A lot of woody material and log jams, creating some nice features in places



Some deeper pools



Over-widened,
uniform sections



Culvert
downstream at SP
29235 80507
(before it gets
sandwiched
between the two
sides of the A4114)