



Andrew
Apanasionok

River and Catchment Restoration Officer



Warwickshire
Wildlife Trust

Recruitment information

About Warwickshire Wildlife Trust

Warwickshire Wildlife Trust is one of the 46 UK Wildlife Trusts.

Established in 1970, we are a grass roots organisation governed by 14 trustees elected from a membership of 26,000 people, 99% of whom live in the county, and supported by 700 active volunteers. We manage an estate covering 1,000 hectares in Warwickshire, Coventry and Solihull and no one living or working in that area is more than 6 miles from one of our 67 nature reserves.

As members of the influential network of Wildlife Trusts, we are part of a collective covering the whole of the UK with 870,000 members, 32,500 volunteers, 2,500 staff and 600 trustees, all working together through a central unit, the Royal Society of Wildlife Trusts (TWT). Together we are on a mission to restore a third of the UK's land and seas for nature by 2030.

We believe everyone, everywhere, should have access to nature and the joy and health benefits it brings. Each Wildlife Trust is an independent charity formed by people getting together to make a positive difference for wildlife, climate and future generations. Together we care for 2,300 diverse and beautiful nature reserves and work with others to manage their land for nature, too.



You will help fulfil our vision of a wilder Warwickshire

Warwickshire Wildlife Trust is embarking on an ambitious new strategy. By 2030 we want to have put wildlife into recovery by creating more space for nature with more people on nature's side.

The **Tame Valley Wetlands (TVW) Team** play a crucial role in helping to deliver that vision. The Tame Valley Wetlands is a Landscape Partnership Scheme (TVWLPS) involving stakeholders across the Tame Valley Catchment delivering landscape scale conservation. It works across rural and urban settings. The TVW Team works with stakeholders to develop projects that will have a lasting impact on biodiversity across the landscape, including habitat restoration and creation, community engagement, citizen science and surveys. These projects will enable wildlife to survive the impacts of natural and man-made events and adapt to the effects of climate change, with the ultimate vision of creating a landscape rich in wildlife and accessible to all.

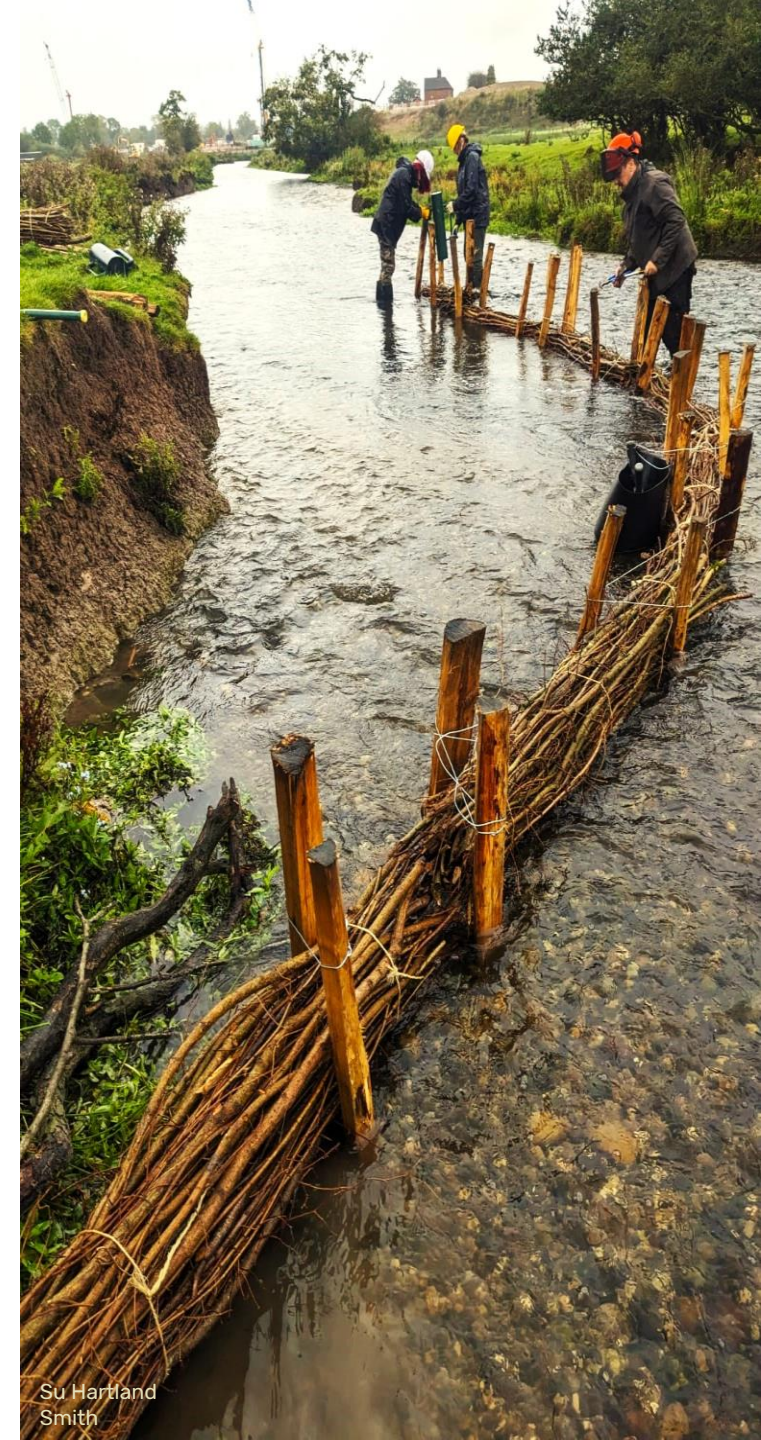
Since it started in 2005 the TVWLPS has delivered numerous projects on the river Tame and its tributaries helping to restore natural processes and connect people to their local rivers.

To find out more visit:

<http://www.tamevalleywetlands.co.uk/>

As part of a small but busy team, you'll be expected to:

- Deliver a range of river and catchment related projects
 - Liaising with stakeholders to develop project delivery plans
- Collaborate with the team – ensuring effective delivery of work by supporting with project design and development



Su Hartland
Smith

Warwickshire Wildlife Trust is an ambitious organisation

We seek to learn from experience and embrace new ideas. We are driven by our shared passion for nature, and support each other to be the best we can.

We strive to communicate and collaborate well, representing the Trust in a friendly, professional, and well-informed manner.

We are a digitally-enabled organisation and embrace digital technologies and innovations to support, streamline and increase the Trust's activity & impact.

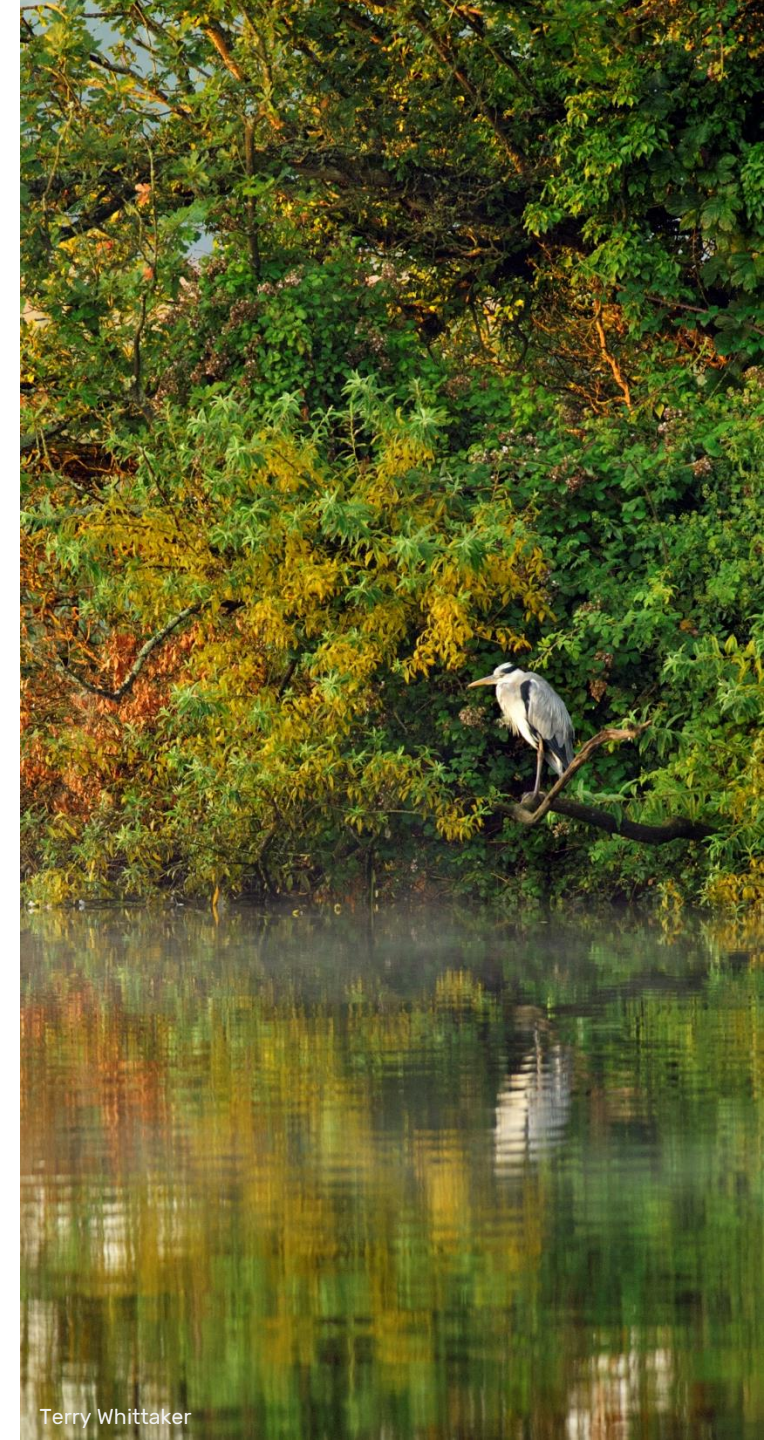
Specific skills, experience and attributes

Our ideal candidate will have some experience of project management, working with landowners and an understanding of river related issues, and be ready for the next chapter in your career.

You should already have a solid understanding of Windows desktop operating systems and Microsoft 365 – but your brilliant communication skills with colleagues and partners will be just as important.

To succeed in this permanent, full time role, you'll also need to be:

- Enthusiastic and keen, with a curious mind
- A great communicator and a real team player
- Someone with great attention to detail
- Driven and always seeking to improve.



Job specification

Accountable to: Tame Valley Wetlands Manager

Location: This role is contracted to Hams Hall Environmental Centre, Coleshill. It follows the agile working framework, which guides all roles at the Trust (i.e. a balance of office, site & home working where appropriate to the role). It also includes regular travel across county.

Salary: Grade 2b £23,449 - £32,088 subject to experience

Benefits:

Employers' pension contribution up to 6% (with 4.5% from employee)

25 days holiday plus bank holidays

Access to Electric Vehicle salary sacrifice scheme

Employee Assistance Programme

Death in service benefit equivalent to 3x salary

Responsible for:

Volunteers, contractors

Liaison with:

Landowners, partnership organisations, local communities and contractors

Hours: Full Time, 35 hours per week

Contract: Permanent





Warwickshire
Wildlife Trust

We are wilder together



twitter.com/wkwt



facebook.com/WarwickshireWT



instagram.com/warwickshirewt

warwickshirewildlifetrust.org.uk